



Forest Adventure Scavenger Hunt

RECOMMENDED AGES

11--18 YEARS

Each youth who submits their completed scavenger hunt sheet and photos by June 15, 2020 will receive a prize! Submit your entry and photos by going to <https://alleghenyforestalliance.com/events/scavenger-hunt>.

Safety first: In case of an emergency, call the ANF District Ranger's office nearest your location. Their phone numbers are listed below. Some areas on the ANF do not have cell service coverage, so let someone know where you're going and what time you expect to be back. Marienville Ranger Station: 814-927-6628 Bradford Ranger Station: 814-362-4613

Student's Name: _____ Age: _____



Remember to take pictures of yourself doing these activities! Send us your favorite photo.

Find a tree that's easy to climb and tell us what you find.

Find a log you can walk across.

Find some boulders to climb.

Wade in a shallow stream. What else is in the water?

Find a waterfall and take a selfie with it behind you.

Skip stones across a creek or pond.

Find a tree growing out of a crack in a rock. Where is it getting nutrients? Follow the roots as far as you can.

Find a stream and look along the banks for signs left by visiting animals. What do you see? _____

Watch for things that don't belong in nature.

What did you find? _____

Find a really cool stick. What is it from?

Find a creek or stream. Do you know its name?

Find pine needles. Are they White Pine (5 needles stuck together) or Red Pine (3 needles stuck together)? _____

Find bushes or trees with berries. What kind are they? _____

What do they provide food for? _____

Find a mud puddle. Is there anything living in it?

Roll a rock over. What do you find underneath? (When you're done, gently put it back where it was.)

Let's focus on forestry:

Find a tree stump and count the growth rings.

How old was the tree? _____

Find a dead tree. Can you tell why it died?

Stand in one spot and count all the trees you can

see by their approximate age: Mature _____

Young _____ Saplings _____ Seedlings _____

Standing in the same spot, count all the dead or sick trees around you. _____ Do you think

that's a lot of trees? What percentage is this of all the trees you counted in this spot? _____

(dead/sick divided by total trees = percentage)

Find a large tree with a hole at its base. Use a small stick to see what's in the hole. If there is red

“saw dust”, this is caused by Red Rot, a disease that occurs in very old cherry trees.

Find a non-native “invasive” plant crowding out trees and other native plants. Do you know what the plant is? Take a picture, research it and tell us what it is. _____

What is growing under the trees in the “understory”? _____

What is on the ground? _____

Look for seedlings missing leaves. This is caused by deer and can prevent new trees from growing.

Look for these pests, diseases and invasive plants in the forest. If you find them, take a photo and write the GPS coordinates below the photo. <https://www.invasivespeciesinfo.gov/species-type> Did you find any others?



Hemlock Woolly Adelgid



Beech Bark Disease



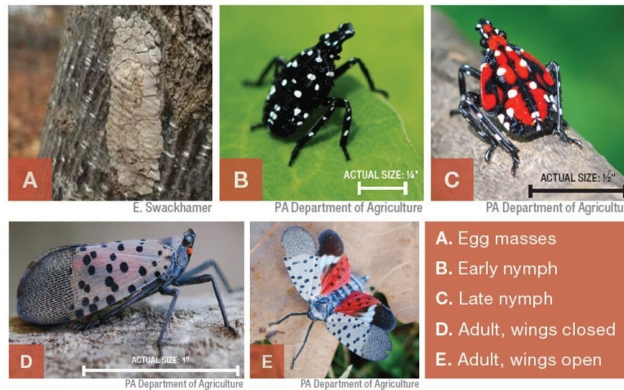
Japanese barberry bush



Sudden Oak Death



Emerald Ash Borer



Spotted Lanternfly

